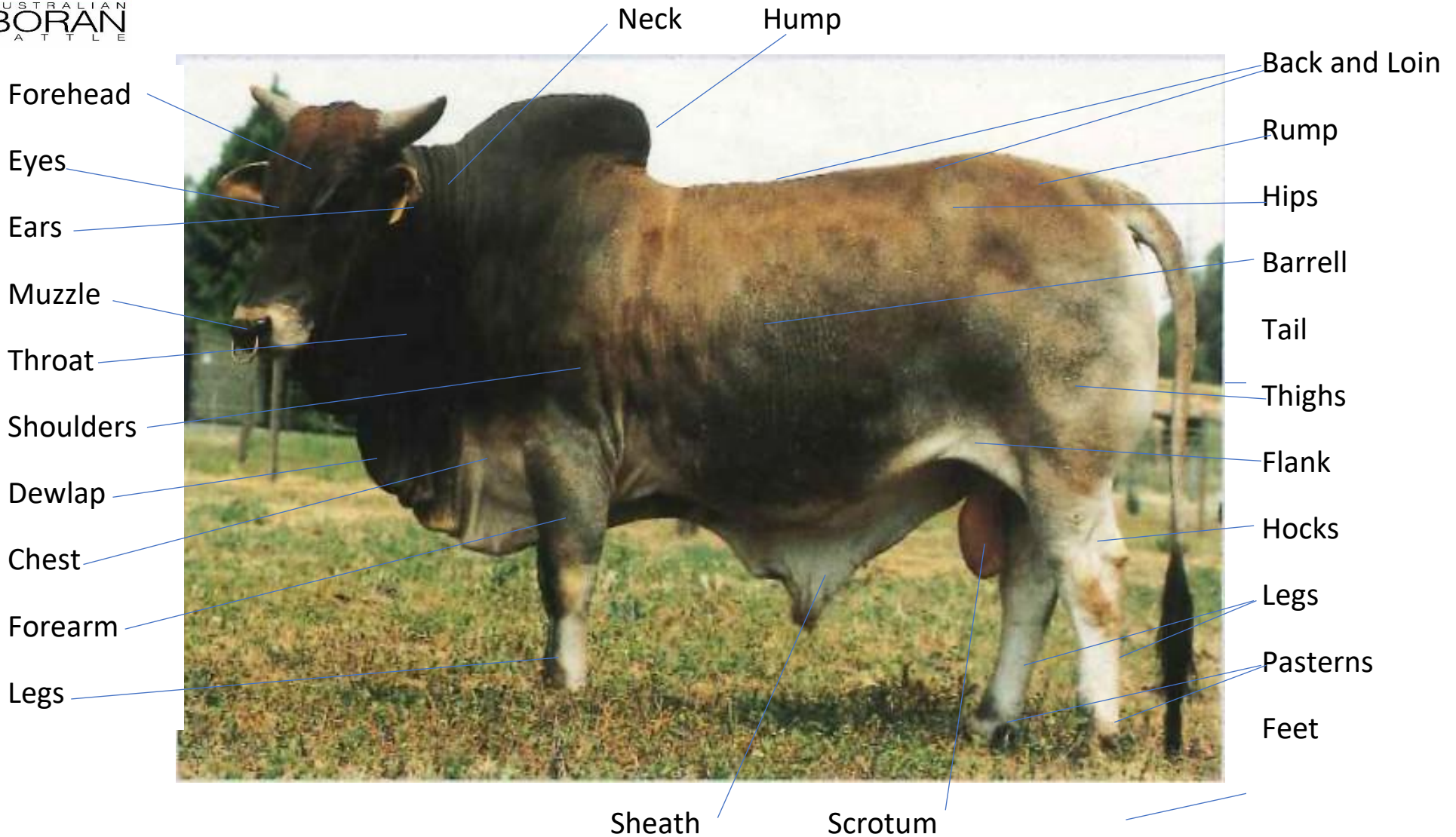




# Australian Boran Cattle Inc Breed Standard

## Terminology



## Characteristics

Component	Desirable characteristics
Head	Bull coarse and masculine, well hooded eyes, dark pigmentation around the eyes is desirable. Cow more feminine, well hooded eyes, dark pigmentation around the eyes is desirable. Head slightly convex when viewed from the side. Muzzle broad, dark pigmentation desirable.
Neck	Bull short, strong, thick and muscular, darker in colour. Cow short and strong. Neck blends smoothly into the shoulders and head.
Hump	Rounded thoracic or neck hump, positioned above and in-line with the front legs. Bull large often leaning to the rear. Cow rounded and smaller.
Back	Long, straight, strong and well fleshed.
Chest and shoulders	Bull smooth, wide and deep; shoulders broader than rump. Cows smooth, wide and deep: shoulders and hips similar in width. Well sprung ribs showing good capacity.
Sheath and scrotum	Moderate umbilical fold. Sheath firm skin, good muscle control and angulation. Scrotum large, smooth and firm with a narrow neck. Testicles even size.
Udder	High tight and well attached. Teats small to medium sized. Four quarters of equal size.
Hindquarters	Wide rump and hips. Rump long and broad with a slope of approximately 22.5 degrees from hip to pins bones. Upper thighs full and thick, rounded and well fleshed thick through the twist. Tail low set. Long and narrowing towards the point, well-formed and pigmented switch.
Feet and legs	Legs medium in length, strong and squarely set. In proportion to and balance with the rest of the body. Front legs straight; hind legs wide and strong with good angles not sickle hocked or post legged. Moderate bone. Sound joints. Hooves straight, symmetrical and well pigmented with even sized claws.
Hide and Coat	Skin thick, loose and motile, preferably with dark pigmentation. Large well-defined dewlap. Hair short, glossy and oil rich. Diverse colours; includes white, red, grey, spots, pattens and dark points.
Size	Medium frame score.
Movement	Free moving with rear hooves tracking into the front hoof prints.
Temperament	Docile easily handled. Responds well to human contact. Strong herd instinct, good collective and individual creche instinct.
Fertility	Bull highly fertile, virile, high libido. Cow highly fertile, calves unassisted.